

ELDORADO STONE®

GEMSTONE™ ArtWall™



THE MOST BELIEVABLE ARCHITECTURAL STONE VENEER IN THE WORLD™

GETTING STARTED



before



Suggested Locations

ENTRYWAYS, HALLWAYS,
HOME OFFICE, LIBRARY,
MASTER BEDROOMS,
ACCENT WALLS

The ArtWall™ is an ideal example showing how easily a Gemstone™ Wall can be attained and how dramatic stone transforms a space. Beyond the warmth and texture the ArtWall creates, its versatility and functionality will provide continued admiration for years to come. Imagine a simple entry wall transformed by the subtle textures of

stone and embraced with the photos of friends, family and memorable moments. Or, a home office changed into a peaceful library for respite and relaxation. Each Gemstone Wall has been carefully crafted to create an authentic masonry stone wall look that is attainable, purposeful and, most of all, believable.

Before You Begin

Please review our complete installation instructions at www.eldoradostone.com before beginning this Gemstone Wall. The following installation tips are designed to add additional detail and understanding on how to accomplish these unique installations.

LOCATION OF WALL AND SHELVES

The location of the ArtWall should be carefully selected since it will become the predominant architectural statement in your room. Before you begin to determine the number of shelves and their size on the existing wall. Shelves can be placed wherever you'd like either symmetrically or in a random, asymmetrical configuration.

SELECT STONE PROFILE AND COLOR

Before you start to prep the wall surface, determine the Eldorado Stone profile, color and grout technique. Each individual Eldorado Stone profile creates their own distinct appearance in a range of scale, texture and surface depth. The finished installation — from refined to rustic, contemporary or traditional — can be achieved depending upon the stone selected.

Recommended Eldorado Stone and Brick for ArtWall

The ArtWall showcased in this Idea Book uses Nantucket Stacked Stone. You may wish to use a different profile. The following profiles are also recommended. Please visit: www.eldoradostone.com to view additional profile colors.



Nantucket
STACKED STONE®



Sanibel
COASTALREEF™



Shasta
MOUNTAIN LEDGE



Silverton
**MOUNTAIN LEDGE
PANELS**



Portofino
MODENABRICK®



NANTUCKET *Stacked Stone with a Dry-Stack grout technique was specified for the ArtWall represented in this Idea Book.*



CASTELLO *RomaBrick with an Overgrout technique illustrates how rustic and old-world the face appears when Overgrout is installed.*



CASTELLO *RomaBrick with a Standard grout technique. A Standard grout technique creates a look much different than the other two techniques above.*

DIFFERENT GROUT TECHNIQUES

The four profiles recommended for the ArtWall (Stacked Stone, Coastal Reef, Mountain Ledge and Mountain Ledge Panels) are designed to install as a Dry-Stack joint. These profiles, and the recommended grout technique, permits a simple yet refined installation. A Dry-Stack joint is accomplished by “dry” fitting each stone prior to installation. Each piece can be laid with virtually no joint.

If you decide to specify Eldorado Brick or another profile instead, either a Standard or an Overgrout technique can be employed.

STANDARD JOINT

Each piece is laid 0.5" apart. A grout bag is used to fill joints with mortar and force grout into any voids. The joints are then struck back to expose the edges of each stone.

OVERGROUT JOINT

Each piece is laid 0.5" apart. The grout should overlap the face of the veneer widening the joints and making them very irregular.

STEP TWO

Locating and Installing Shelving



The kitchen wall before its transformation into the Eldorado Stone ArtWall.



Placement of the shelving brackets and shelves prior to stone installation so shelves appear recessed within the stone upon completion of ArtWall.



LOCATING SHELF POSITIONS

Install the shelving before commencing prep of the wall you wish to transform into an Eldorado Stone ArtWall.

It is important to compensate for the depth of the Eldorado Stone specified for the installation. You can find out the depth of a particular Eldorado Stone profile at www.eldoradostone.com. The profile sizes are located in the "Download" page of the website.

Select a stone profile and make sure the stone will return inside the shelves. This may require a furring strip to align the shelves with the proper depth to finish with the stone veneer. Take note of to avoid having any visible cut edges against the shelving.

Consider the depth of the shelves to make certain the shelf depth does not obstruct pathways after the ArtWall is completed.

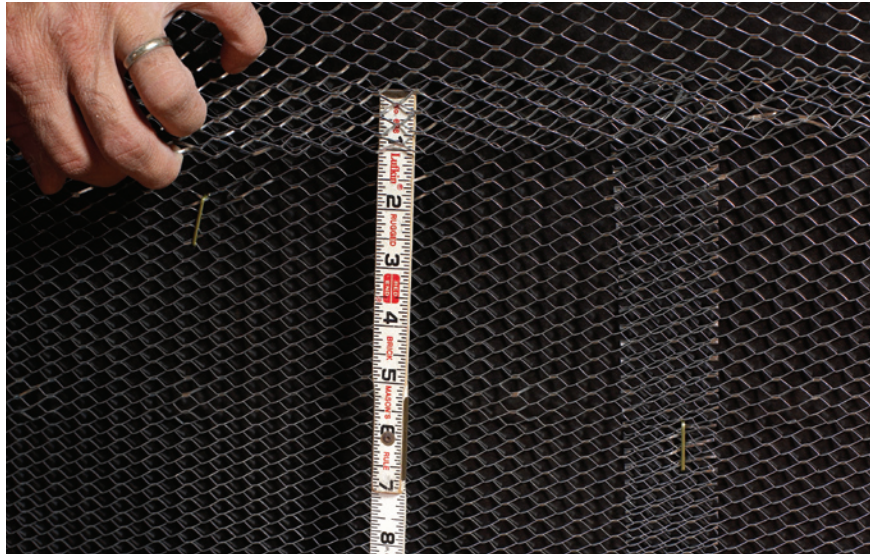
Lighting the ArtWall with overhead, recessed lighting may also be a design option. As always, consult with a licensed electrician to meet your local code requirements.

STEP THREE

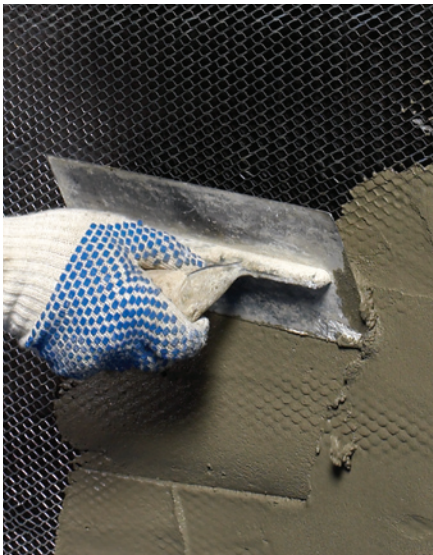
Preparing the Surface for Eldorado Stone



Install weather-resistant barrier.



Overlap vertical and horizontal seams.



Cover entire lath with mortar.



Score mortar horizontally.

WEATHER-RESISTIVE PAPER

Install one layer of weather-resistant barrier. Where vertical joints occur, overlap by at least 6". Where horizontal joints occur, overlap by at least 2". Start the paper from the bottom and move up.

GALVANIZED METAL LATH

Install self-furred 2.5 lb. or higher galvanized metal lath. Overlap lath sides by at least 1" and wrap corners 16". Attach lath (with small cups

pointing upwards) with galvanized nails or staples 6" on stud center, vertically, and 16" on stud center horizontally.

SCRATCH COAT

Use premixed Type N or Type S mortars. Apply 0.5" thick coat of mortar. Cover the entire lath with mortar. The mortar should be scored horizontally with a notched scarifier.

STEP FOUR

Setting Eldorado Stone

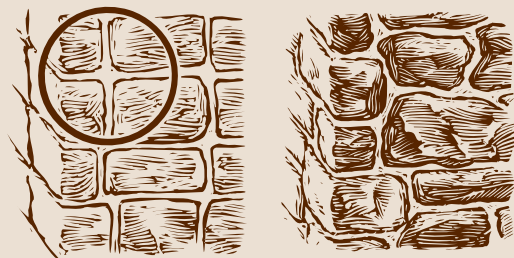


Top: Grid the wall with chalk lines. **Above:** Apply mortar to back of stone. **Above right:** Keeping the stone level, wiggle into place.



Helpful Tips

Depending on the profile selected, chalk lines may be desired to grid the wall and keep the joints straight. Lay out a minimum of 25 sq. ft. of veneer on the floor to ensure a selection of random color hues and a variety of shapes are selected for installation.



CAREFUL! Avoid the awkward “+ sign” pattern (left) that can occur if installed incorrectly. Locate the individual stones so the grout joints are staggered (right).

PREPARING THE SETTING MORTAR

The ArtWall uses a Dry-Stack technique so be sure to use a color-modified mortar to match the color hue of the stone. Moisten the scratch coat and veneer to reduce initial absorption. Apply a 0.5" even layer of mortar to the entire back of veneer. Install corner stones first, alternating long and short returns. Then wiggle face stones into place gently and do not tap or hit the stones.

For comprehensive installation instructions go to www.eldoradostone.com before beginning this Gemstone ArtWall.

GROUT COLOR

Though Eldorado's ArtWall is installed with a Dry-Stack technique, other Eldorado Stone profiles work best with either the Standard grout or Overgrout techniques. Grout color is just as important as laying the stone. You can, and many times should, add color to the mortar (as an accent) to more closely match the stone. Care should be taken to be assured that the color emulates a natural earthen sand color.

SELECT GROUT TECHNIQUE

The appropriate grout technique depends on the Eldorado Stone profile specified. The ArtWall on the cover of this Idea Book (show right) employs a Dry-Stack grout technique which requires no surface grouting. A different Gemstone Wall — Eldorado's CandleWall (below right) — uses an Overgrout technique.

Many Eldorado Stone profiles work with different grout techniques. Selecting a grout technique and applying the grout is just as important as laying the stone.

DRY-STACK JOINT

A Dry-Stack joint is accomplished by "dry" fitting each stone prior to installation. Each piece can be laid with virtually no joint. (See page 4.)

If you decide to specify Eldorado Brick or other profiles instead, either a Standard or an Overgrout technique can be employed.

STANDARD JOINT

Each piece is laid 0.5" apart. A grout bag is used to fill joints with mortar and force grout into any voids. The joints are then struck back to expose the edges of each stone. (See page 4.)

OVERGROUT JOINT

Each piece is laid 0.5" apart. The grout should overlap the face of the veneer, widening the joints and making them very irregular. (See page 4.)



This ArtWall employs a Dry-Stack grout technique which requires no surface grouting.



This other Gemstone Wall — Eldorado's CandleWall — uses an Overgrout technique.

STEP FIVE

Grouting Eldorado Stone continued

STANDARD GROUT TECHNIQUE

- Use a grout bag to fill joints with mortar and force grout into any voids.
- Keep the face of the stone clean (unless you want a slurry finish) because smeared mortar will permanently stain the stone. If mortar gets on the veneer, let it set until dry and crumbly and brush off with a dry whisk broom.
- Don't grout more than you can manage at one time. Joints can be tooled with specific masonry tools or with anything you find easy to use. A stick is often the tool of choice.
- Use a whisk broom to smooth joints and clean away any loose mortar from the joints and veneer face.
- Don't allow joints to fully harden before tooling. Mortar should be pliable and crumbly, not too wet and not too dry.

OVERGROUT TECHNIQUE

- Overgrout technique smooths the mortar to a plane flush with the stones face and tends to make the stonework appear rustic and aged.
- The grout overlaps the face of the stone, widening the joints and making them very irregular.
- If desired, a sponge can be used to wash the joints and expose the aggregates of sand within the mortar. Be cautious not to get the wet mortar on the stone surface as this will stain the stones. If wet mortar from sponging the joints gets on the stone surface wash it immediately with clean water.

SPECIAL NOTE

Eldorado highly recommends that multiple tests are done with some loose stones on a board before commencing grouting the actual wall.



Above: Eldorado Stone recommends adding color to the mortar.

Below: Even though Eldorado Brick is being grouted in this picture, the theory is comparable when for grouting Eldorado Stone.



VOILÀ! The Gemstone ArtWall complete



The ArtWall from Eldorado Stone.

The installation example above is a Dry-Stack technique and will not require grouting or additional steps. Congratulations, you now have you're very own Eldorado Stone Gemstone Wall.

Eldorado Stone. The Foundation for Memorable Spaces.



.....

1370 GRAND AVENUE, BUILDING B
SAN MARCOS, CA 92078
1.800.925.1491
WWW.ELDORADOSTONE.COM

The final printed color of this PDF is subject to the quality of the original photography and printer from which this PDF is generated. You should not assume this printed sample is a true representation of the actual product. For an exact representation, please contact your local Eldorado Stone® distributor or sales representative for a product sample.

Eldorado Stone® stone veneer should only be applied to structurally sound surfaces incorporating good building practices meeting all local code requirements. Before starting any stone application, check with your local building code requirements and read all manufacturers' installation instructions.